

XJTLU

XJTLU SIP-TC Shuttle Bus Reservation Service for Students

Dear students,

Please be kindly noted that shuttle bus commuting between SIP Campus and TC Campus will open service for students from Oct 10, 2022. Below is the service detail and reservation guide for your information.

1. Shuttle bus service information:
 - a. Service start time: **Oct 10, 2022**

Category	Shift	Departure	Arrival	Departure Time		
Working days/ Examination days	3	SIP	TC	7:30	9:00	17:10
		TC	SIP	7:30	17:10	18:00
Saturday / Sunday	1	TC	SIP	9:00	-	-
		SIP	TC	18:00	-	-
winter and summer vacation	1	SIP	TC	9:00	-	-
		TC	SIP	18:00	-	-
University closed days / National holidays	0	-				

*The shift will be adjusted based on the actual operation situation accordingly.

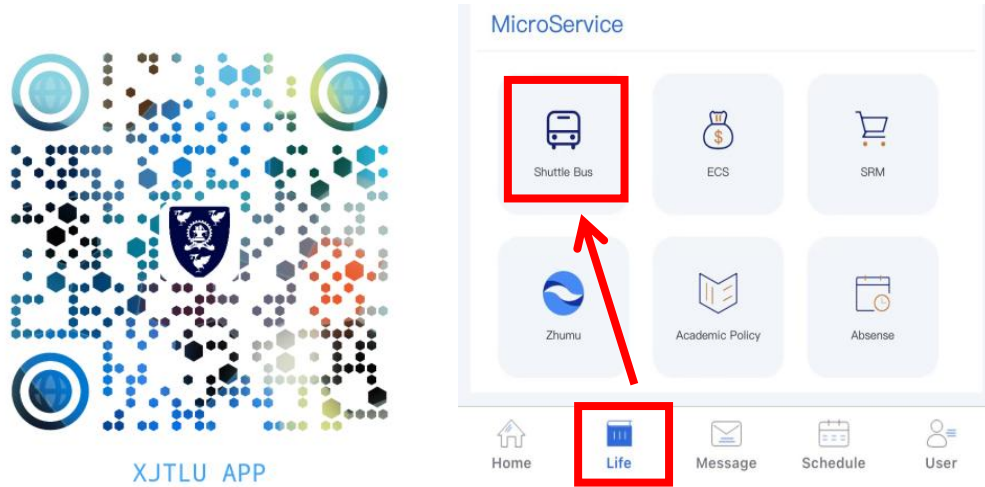
- b. The one-way time of shuttle bus is around 1 hour 20 minutes (subject to the actual arrival time).
2. Bus reservation
Please do scan below Shuttle Bus Booking system QR code and follow the prompts to complete your reservation.

Shuttle Bus



XJTLU

Or scan the QR code below to download and install the latest version of the XJTLU app. Shuttle bus service has been added. ([Detailed Installation Instruction](#))

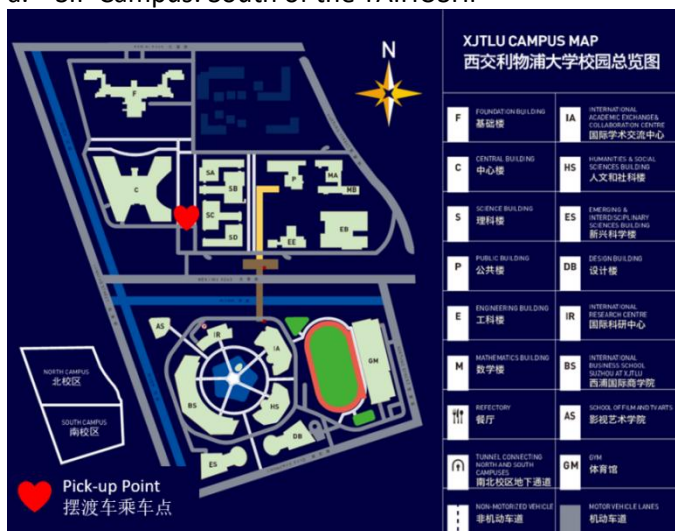


Reservation notes:

- In order to facilitate bus scheduling, please make your reservation at least two days in advance if you need to take the shuttle bus.
- The maximum reservation quota is **20 times** per month.
- Vehicle resources are limited. If you need to cancel the reservation, please do cancel it online on time. If you do not cancel your reservation, the appointment will be counted in the 20 times.
- Please arrive at pick-up point on time, and confirm your reservation code with the driver when boarding on the bus.
- The shuttle bus service is not provided during University closed Day and National Holidays.

3. Pick-up Point

- SIP Campus: South of the TAIHUSHI



- b. Taicang Campus: Between C2 and D1; Between A2 and B1(before 9am arrival only)



4. Regulation of bus taking

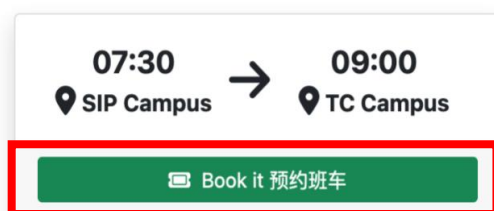
- The shuttle bus will be dispatched according to the reservation data before **4 pm** of the previous day. Please make an appointment in advance to ensure a successful reservation.
- Reservation can be made on the current date. The number of remaining seats is calculated according to the patronage and reservation number of the previous day.
- Passengers should be ready to get on and off the bus at the designated pick-up point according to the scheduled time, and get on and off bus in a civilized and orderly manner.
- Passengers are strictly prohibited to carry inflammable, explosive, toxic and other dangerous goods on the bus. Smoking is not allowed on the bus.
- Passengers shall not encourage the driver to change the route.
- In the process of driving, passengers should fasten their safety seat belts and not walk around in the carriage.
- The passengers must keep the carriage clean.
- Any physically unfit person is not suitable for the travel.

5. Shuttle Bus Booking System Guide

- Make a reservation

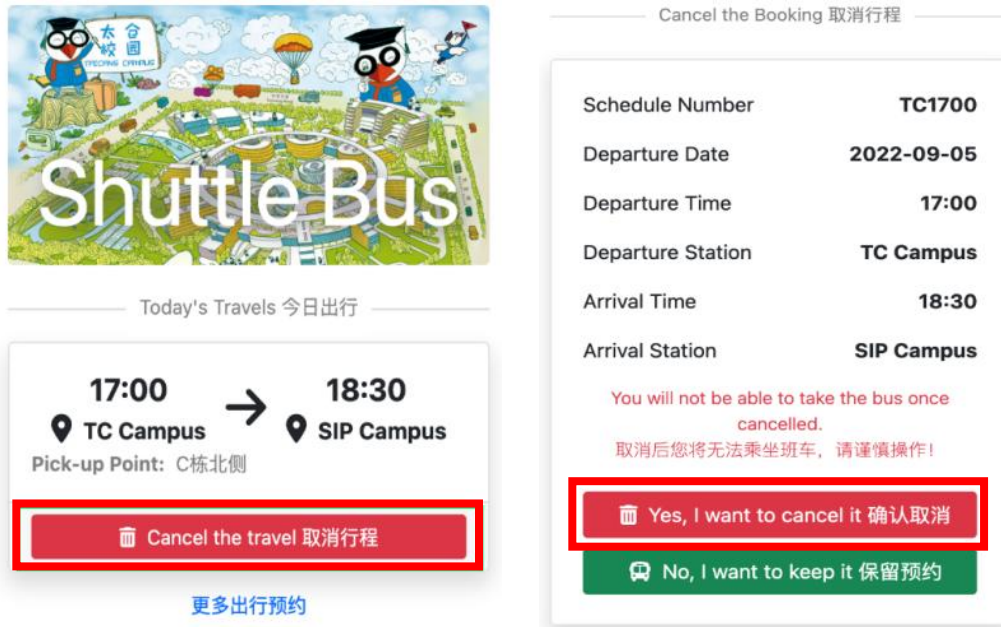


2022-09-07 Wednesday



XJTLU

b. Cancel the booking



The image shows two screenshots from the Shuttle Bus app. The left screenshot displays the 'Today's Travels 今日出行' section with a route from TC Campus at 17:00 to SIP Campus at 18:30. A red box highlights the 'Cancel the travel 取消行程' button. The right screenshot shows the 'Cancel the Booking 取消行程' confirmation screen with a table of booking details and two buttons: 'Yes, I want to cancel it 确认取消' (highlighted in red) and 'No, I want to keep it 保留预约'.

Cancel the Booking 取消行程	
Schedule Number	TC1700
Departure Date	2022-09-05
Departure Time	17:00
Departure Station	TC Campus
Arrival Time	18:30
Arrival Station	SIP Campus

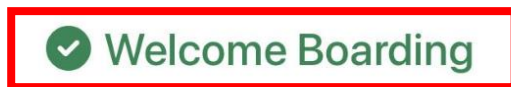
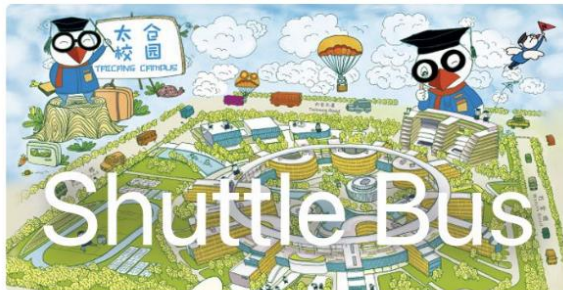
You will not be able to take the bus once cancelled.
取消后您将无法乘坐班车, 请谨慎操作!

Yes, I want to cancel it 确认取消

No, I want to keep it 保留预约

c. Confirm reservation code with the driver when boarding on the bus

Before getting on the bus, scan the QR code posted on the car (or shown by the driver) to check the ticket. The appearance of "Welcome Boarding" indicates that the Boarding has been successfully approved and you may take the shuttle bus.



Welcome to take the bus, it is expected to arrive at the TC Campus at 09:00.

Please contact CMO@xjtlu.edu.cn or 0512-88161080 if you have any problems in booking the shuttle bus.

西交利物浦大学工业园区校区至太仓校区区间车学生预约服务

各位同学,

2022年10月10日起,西交利物浦大学工业园区校区与太仓校区的区间车预约将对在校生开放,车辆使用和预约信息及其他有关注意事项,请查看如下信息。

一、发车信息

1、服务起始时间:

10月10日起正式运营。

日期类别	班次数	始发地	目的地	出发时间		
工作日/考试周	3	园区	太仓	7:30	9:00	17:10
		太仓	园区	7:30	17:10	18:00
周六/周日	1	太仓	园区	9:00	-	-
		园区	太仓	18:00	-	-
寒暑假	1	园区	太仓	9:00	-	-
		太仓	园区	18:00	-	-
校园关闭日/国家法定节假日	0	-				

*具体班次安排会根据实际需求和运营情况进行调整

2、区间车单程时间约为1小时20分钟(以实际到达时间为准)。

二、乘车预约

请扫描如下二维码,登入区间车预约小程序,根据提示完成预约。

Shuttle Bus

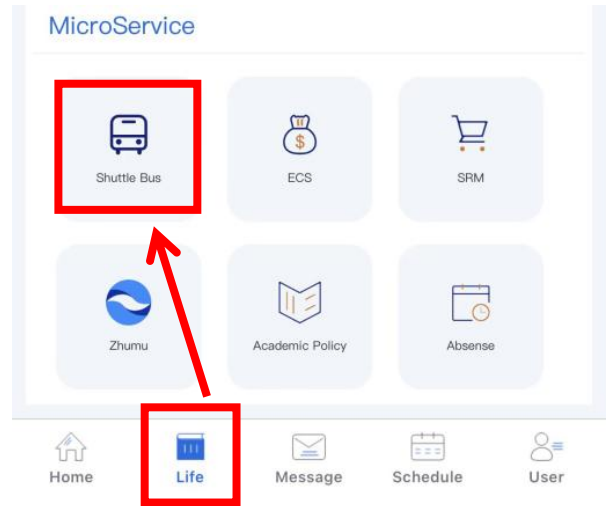


XJTLU

或扫描下方二维码下载并安装最新版本的 XJTLU app。已新增区间车线上预约入口。([详细的安装说明](#))



XJTLU APP

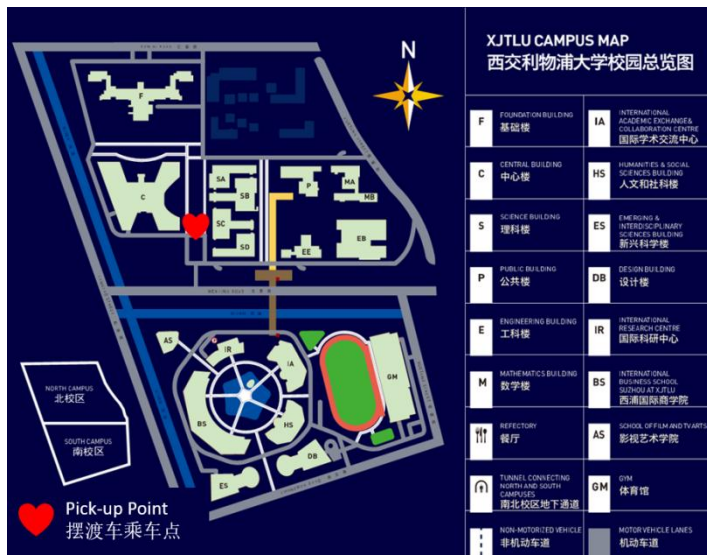


预约注意事项:

- 1、为了方便车辆调度, 请有需要乘坐区间车的人员, 提前**至少两天**进行预约。
- 2、学生每月最大预约次数为 **20 单次**。
- 3、车辆资源有限, 如需取消预约, 请务必在线上操作。如果您不及时取消预约, 该预约将被计算在 20 次预约中。
- 4、乘车当日, 请准时于指定乘车点, 与司机确认乘车。
- 5、校园关闭日及国家法定节假日不安排行程。

三、区间车乘车点信息

- 1、园区校区: 北校区太湖石北侧 (详见图示)



XJTLU

2、太仓校区：C2 与 D1 之间，A2 与 B1 之间（仅工作日 9 点前到达班次）（详见图示）



四、区间车乘车注意事项

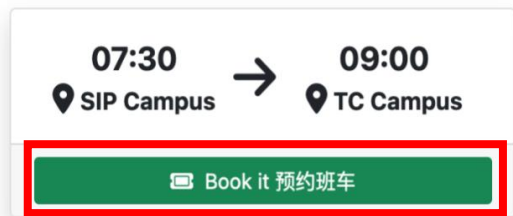
- 1、每日区间车根据前一日 16 点前的预约数据派出，16 点后无法预约次日行程，请乘车人提前进行预约，以确保成功预约。
- 2、可预约当日区间车，余座数根据前一日派车核载人数及预约人数计算。
- 3、乘车人根据预定的时间，在指定乘车点做好上下车准备，文明有序乘车。
- 4、乘车人严禁携带易燃、易爆、有毒等危险品上车。车内不得抽烟。
- 5、乘车人不得怂恿驾驶员更改行车路线。
- 6、在车辆行驶过程中，乘车人员需全程系好安全带，不得在车厢内随意走动。
- 7、乘车人必须爱护车厢内部卫生。
- 8、如有身体不适，请勿乘车。

五、区间车预约指南

1、预约



2022-09-07 Wednesday



2、取消预约



Today's Travels 今日出行

17:00 → 18:30
TC Campus → SIP Campus
Pick-up Point: C栋北侧

Cancel the travel 取消行程

[更多出行预约](#)

Cancel the Booking 取消行程

Schedule Number	TC1700
Departure Date	2022-09-05
Departure Time	17:00
Departure Station	TC Campus
Arrival Time	18:30
Arrival Station	SIP Campus

You will not be able to take the bus once cancelled.

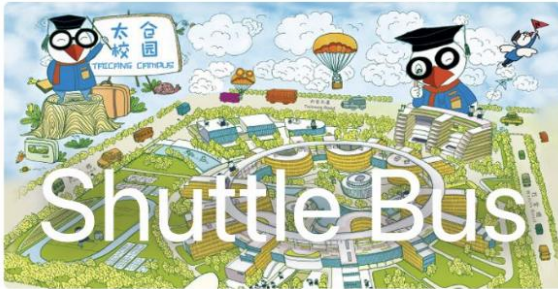
取消后您将无法乘坐班车，请谨慎操作！

Yes, I want to cancel it 确认取消

No, I want to keep it 保留预约

3、乘车前与司机确认乘车

乘车前，预约人需扫描车上的二维码（或司机出示的二维码）确认乘车，当预约人手机端出现“Welcome Boarding”字样时表示确认成功，方可乘车。



Welcome Boarding

Welcome to take the bus, it is expected to arrive at the TC Campus at 09:00.

如对以上信息有任何疑问，请随时联系 CMO@xjtlu.edu.cn 或拨打 0512-88161080。